

TIMBER DESIGN

AWARDS 2024





T3 Collingwood

POWER OF COLLABORATION

“ Elevating the skyline on the fringe of Melbourne stands T3 Collingwood, a remarkable achievement in mass timber construction with an emphasis on sustainability. Without doubt it raises the bar for commercial infrastructure construction in Australia.

— Australian Sustainable Hardwoods (ASH)

”

☎ 03 8862 8888

✉ info@icon.co

🌐 icon.co

🌐 @icon-group-construction

📷 @icon_construction_

MADE

BY

FDC

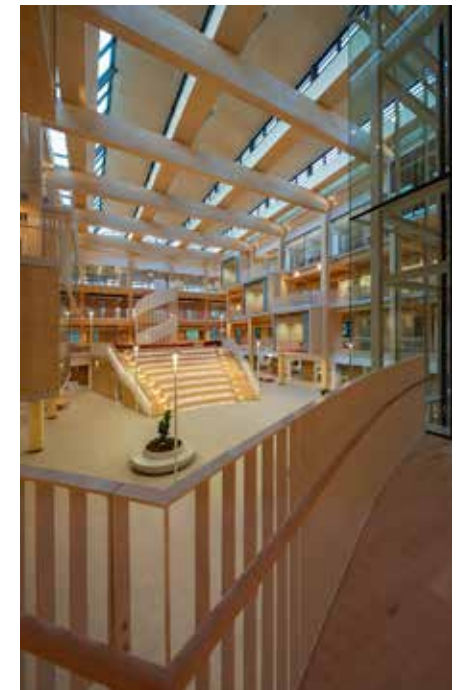
A NEW STANDARD IN TIMBER DESIGN & BUILDABILITY

FDC is a leading building delivery partner across Australia. In an industry traditionally dominated by concrete and steel, the rare transformation of the Michael Kirby Law School at Macquarie University is a showcase in innovative timber design, demonstrating new standards for buildability and environmental stewardship.

The Michael Kirby Law School redefines the adaptive re-use possibilities for existing spaces in the future through considered materiality and construction techniques. More insights from this, and other, award-winning projects can be found at **Made by FDC.**



MADE.FDCBUILDING.COM.AU
FDCBUILDING.COM.AU



CONTENTS



Timber Development Association (NSW)

Unit 6, 281 Pacific Highway
North Sydney, NSW 2060

Phone: 0420 232 253

Email: inbox@timberdesignawards.com.au

Website: www.timberdesignawards.com.au

Published by:

ARK MEDIA

Phone: 07 5629 5311

Email: marketing@arkmedia.net.au

Website: www.arkmedia.net.au

Managing Editor: Trish Riley

Graphic Design: Andrew Crabb, Dujon Kie

Advertising Production Coordinator: Lisa McEwan

Advertising Sales: Dennis Andrews,
Paul Baird, Daniel Rutland

Printed by: Southern Impact

MESSAGE FROM WOODSOLUTIONS	4	EXCELLENCE IN THE USE OF TIMBER PRODUCTS	28
MESSAGE FROM THE CEO OF TDA	5	FINALISTS	31
SPONSORS	6	ENTRANTS	32
JUDGES AND JUDGES INFORMATION	8	HALL OF FAME	40
EXCELLENCE IN TIMBER DESIGN	12		



Excellence in timber protection, Award winning performance

The Pavilion Performing Arts Centre Sutherland
Timber Design Awards Winner 2023 Excellence
in Timber Design - Public Spaces

Every Intergrain Trade & Industrial project is approached with bespoke consultation and specification. Call our Help Line on **1800 630 285** to find out how we can support your next project.

MESSAGE

FROM WOODSOLUTIONS

On behalf of Australia's timber industry, I would like to congratulate all of the entrants, finalists, and winners of the 2024 Australian Timber Design Awards.

WoodSolutions is an industry initiative designed to provide independent, non-proprietary information about timber and wood products to professionals and companies involved in building design and construction.

The WoodSolutions program is resourced by Forest and Wood Products Australia (FWPA), an industry services company funded by the forest and wood products industry and the Federal Government.

Our 50+ WoodSolutions Technical Design Guides continue to be a valued resource to answer all of the questions you need to help with any timber construction related questions you may have, enabling you to design and build using timber with confidence. FWPA has recently published the several new and free resources to support the sector's activity.

The new WoodSolutions Condensation Technical Design Guide is a general best practice for the insulation and construction membranes specification to manage the flow of heat, air, and moisture to avoid surface and interstitial condensation in lightweight and mass timber construction.

The recently published Resilient Timber Homes Technical Design Guide describes how sustainable timber homes can be designed and built with a resilience-focused "Code+" approach, leveraging the combination of factors that make them the natural answer to the challenges from our climate, to provide safety and wellness to their occupants.

The new EPD Database provides values for embodied greenhouse gas emissions (embodied carbon) for a range of timber products and construction materials manufactured in Australia and overseas to help you understand your embodied carbon impact in early design stages and help to select materials that are less emission intensive.

FWPA continues to fund a consumer advertising campaign focused on The Ultimate Renewable™ with ongoing campaign support from our brand ambassador, builder and carpenter Adam Doville. This campaign is supported by Plant Ark's Make it Wood campaign. If your organisation works with wood, I encourage you to consider becoming a program partner and gaining access to a range of resources to help communicate the benefits of timber, with more information at theultimaterenewable.com.au.

Finally, our free supplier listings on our websites are viewed by potential customers with around 100 visits to the WoodSolutions website per minute, so make sure you list with us. Submitting your listing is easy, you will be asked for your logo, a brief description of your business, a website link, and contact details. Our aim is connecting timber product suppliers to the marketplace in an easily accessible format, make sure you are making full use of this free resource.

Thank you to everyone for contributing to a more sustainable future by encouraging the use of timber, and we celebrate the achievements of the entrants in the 2024 Australian Timber Design Awards!



KEVIN PEACHEY
Head of WoodSolutions Program



For more information about designing and building with wood, please visit: woodsolutions.com.au





MESSAGE

FROM TDA CEO

The Australian Timber Design Awards have once again shone a spotlight on the extraordinary potential of timber in modern architecture. With their unique features and exceptional quality, this year's entries have set a new standard for residential projects and showcased a surge in innovative civic buildings that have redefined our expectations.

The diversity of submissions was genuinely captivating, from projects that dazzled with their artistic flair to those that stood out for their pragmatic solutions. Timber's inherent qualities were harnessed to remarkable effect, with a strong emphasis on sustainability—demonstrating its ability to reduce operational energy and embodied carbon. This year's cohort also reveals a significant and exciting rise in the use of exposed timber, with more interior spaces embracing the raw beauty of natural wood to deepen the connection between people and their surroundings.

We extend our heartfelt thanks to our distinguished panel of judges. Their meticulous evaluation and discerning judgement have been instrumental in maintaining the integrity and prestige of the awards, ensuring that every entry received the thoughtful consideration it deserved.

Our gratitude also goes out to our sponsors, whose unwavering support has been crucial in advancing the field of timber design. Their contributions, alongside the collective expertise of industry leaders, continue to shape the future of architecture. We sincerely appreciate their role in making the Australian Timber Design Awards successful.

We'd like to encourage you to delve into these outstanding projects and discover the design care and craftsmanship within. Whether you are a designer, builder, architect, or enthusiast, we hope these projects inspire and ignite your own creative pursuits. Each entry offers a unique narrative, a story told through wood, waiting to be explored and appreciated.



ANDREW DUNN

Chief Executive Officer
Timber Development Association



For more information about Timber Development Association (NSW) visit: www.idansw.asn.au

SPONSORS



WOODSOLUTIONS

Gold Partner / Sponsor of the Australian Timber Design Awards

WoodSolutions is a campaign dedicated to professionals, companies and individuals involved in the design, building design and construction using timber and wood products. WoodSolutions collate and distribute non-proprietary information, produce technical publications and design guides and educate through professional seminars, webinars, expert advice and WoodSolutions Campus.

Together with industry bodies, technical associations and suppliers, WoodSolutions work to inform on all aspects, benefits and requirements of building and designing with timber and wood products. WoodSolutions aims to create a nationwide support network that will inspire the next generation of architects, designers, engineers, woodworkers and consumers.

WoodSolutions is resourced by Forest & Wood Products Australia Ltd (FWPA), a not-for-profit company that provides national research and development and promotional services for the Australian forest and wood products industry.



PENTARCH FORESTRY

Silver Partner / Sponsor of the Residential Class 1 – New Building, People's Choice Awards

Pentarch Forestry is now one of the largest manufacturers of Australian hardwood products in the country and continues to celebrate the natural beauty of Australian timber species. An industry leader in hardwood products such as decking, flooring, cladding, lining and structural timber, Pentarch Forestry provides a sustainable and local source of Australian-made and inspired products for interior and exterior building and design projects. From its headquarters in Melbourne, Pentarch Forestry coordinates its production and distribution operations across Australia while maintaining a strong focus and dedication towards ongoing sustainability and supporting local and regional communities.



INTERGRAIN

Silver Partner / Sponsor of the Fitout – Commercial and Public, Rising Star Awards

At Intergrain, we believe in doing things right—crafting durable, high-performance timber finishes that meet the needs of Tradies, Architects, and Trade Painters across Australia. Trusted by professionals in both commercial and residential sectors, our products enhance the natural beauty of timber while ensuring long-lasting protection. Designed to withstand Australia's harsh climate, our finishes are a preferred choice in the industry. We're committed to sustainability, producing woodcare products that extend the life of timber. Discover the Intergrain difference, where craftsmanship meets innovation, and experience the superior protection our products offer.



XLAM AUSTRALIA

Silver Partner / Sponsor of the Commercial Building and Residential Class 1 - Alteration or Addition Awards

As the biggest supplier of CLT in Australia and New Zealand by volume, XLam has led the market in the manufacture and supply of CLT across a range of commercial, residential and Government projects. The intense interest in engineered timber is driven by a push for greater construction sustainability and an interest in building products and methodologies that improve safety, speed of construction on site, efficiency, and aesthetics. XLam supports clients in using CLT in mass timber construction as well as in hybrid construction, where CLT is used with steel and concrete.

Using XLam CLT is a smart and sustainable choice that creates "greener" buildings, improves construction efficiency, enhances site safety, and delivers a return on investment. Strong year-on-year growth and a commitment to supporting clients with technical advice, design, and their knowledge of DfMA demonstrate that the building and construction industry continues to embrace the use of mass timber. To further support our clients, XLam provides specialist advice and technical and engineering support from concept to completion to ensure successful project outcomes. Our services include supporting the initial design and concept development through to providing installation. The XLam technical team can be engaged to work closely with our clients and project partners to provide technical support, advice, and guidance across all project phases to ensure the benefits of mass timber are realised for each project.



RUBNER AND THECA TIMBER

Silver Partner / Sponsor of the Public Building and Standalone Structure Awards

Wood is a very versatile material with great potential. And Rubner aims to make full use of it, but always in a meaningful way: Rubner's goal is to transform the market and establish wood as the first choice in the construction industry. It allows the creation of natural, wholesome living and working spaces and, at the same time, contributes to the achievement of climate goals. For us, for our children, for a future worth living.

In Australia, Rubner is working via a partnership with Theca Timber that guarantees a local technical and commercial presence from project conception and design until finalisation. While promoting and marketing innovative solutions to the entire local industry, meaning Developers, Architects, Engineers, Specialist consultants and Builders, Theca Timber makes sure that right from the beginning Design for Manufacture and Assembly (DfMA) is progressed to create cost efficiencies in value engineering. Theca Timber can provide technical support and advice during design, full structural design, certification according to AS standards, installation sequences, total supplying of a prefabricated structure with deliveries straight to job sites and technical assistance during erection.



EUROBEECH BY ITI

Bronze Partner / Sponsor of the Furniture and Joinery Award

ITI Australia has revolutionised the timber industry with its expansive range of timber solutions, ensuring accessibility and convenience through our nationwide distribution network. Our commitment to safety, sustainability, and exceptional service sets us apart, making your timber needs seamless.

We are dedicated to providing premium engineered wood products and timber solutions that meet the evolving social and environmental needs of builders, homeowners, and design professionals alike. Backed by local technical experts across the country, we offer comprehensive support, from project planning to product recommendations, always prioritising sustainable practices and safe applications.

Experience the ITI difference—quality, innovation, and sustainability in every product.



RESPONSIBLE WOOD

Bronze Partner / Sponsor of the Australian Certified Timber Award

Responsible Wood is committed to protecting and promoting Australia's unique environments with standards that ensure a forest industry that is environmentally, socially, culturally and commercially sustainable. Responsible Wood pioneered the development of certification standards for wood and wood products sourced from sustainably managed forests in Australia, providing guidance and accountability for forest managers, manufacturers, and suppliers.

Two Australian Standards underpin Responsible Wood - Forest Management (AS/NZS 4708) and Chain of Custody (AS 4707) - which provide guidance and accountability to forest managers, manufacturers and suppliers. They protect and promote Australia's unique environments by ensuring a forestry industry that is environmentally, economically, socially and culturally sustainable.

In 2004, Responsible Wood (then known as the Australian Forestry Standard) joined the Program for the Endorsement of Forest Certification (PEFC), the global authority on sustainable forest management. More than 90per cent of Australia's commercial production forests and over 350 chain of custody sites throughout Australia are Responsible Wood certified. In the forest products value chain, Responsible Wood is the ultimate trust mark for Sustainably Grown, Australian-made timber and paper-based products.



KENNEDY'S TIMBERS

Bronze Partner / Sponsor of the Recycled Timber Award

Kennedy's Timbers have an extensive range of reclaimed and sustainable architectural timbers available in a range of timber species, finishes and applications. Timber products include structural and decorative timbers used as feature posts, beams, flooring, decking, cladding, panelling, battening, screens, ceilings, stair rails and treads, architectural timber joinery and specialised orders - a natural alternative to conventional building products. Kennedy's timbers provide the architect, designer, shop fitter and builder with a full spectrum of timber design possibilities.

Kennedy's Timbers believe its reclaimed and sustainable architectural timbers are an inspired choice for unique building design. Testament to this fact is their impressive history of signature projects. Demand for their timbers across the commercial and residential building industry continues to skyrocket, becoming the leading supplier of premium Australian reclaimed and sustainable timbers.

Kennedy's Timbers are incredibly proud to be associated with this year's Australian Timber Design Awards. They feel their association with these Awards fits their ethos as they take great pride in the wow factor they bring to construction and refurbishment projects. When motivated by aesthetics, design and sustainability, you needn't look any further than Kennedy's reclaimed and sustainable architectural timbers.



TIMBER CONSTRUCT

Bronze Partner / Sponsor of the International Projects Award

Timber Construct is proud to sponsor the Australian Timber Design Award. The Timber Construct Annual Conference and Exhibition, which began with a focus on the timber supply chain, now encompasses the entire construction process, fostering collaboration among manufacturers, engineers, architects, builders, and policymakers.



TIMBER NSW

Bronze Partner / Sponsor of the Fitout - Residential Award

Timber NSW was established in 1906 to represent NSW's timber and forest products industry. It assists its members, stakeholders and the broader industry in operating an economically, environmentally and socially sustainable timber industry in New South Wales. Timber NSW represents the majority of the NSW native hardwood timber industry to local, state and federal government and provides information on forestry management. In NSW, 88per cent of public native forests are protected, with only 12per cent available for harvesting and only 0.3per cent are harvested annually.



PLANET ARK'S MAKE IT WOOD CAMPAIGN

Bronze Partner / Sponsor of the Sustainability Award

Established in 1992, Planet Ark Environmental Foundation is one of Australia's most respected and trusted environmental organisations and is focused on solutions and making positive environmental actions accessible to everyone.

Our vision is of a world where people thrive in balance with nature by transitioning to a carbon-neutral and circular economy. The Make It Wood campaign, which commenced in 2011, supports both these aims by encouraging the increased use of responsibly sourced wood as a building material.

JUDGES

& JUDGES' INFORMATION

Judges are an integral part of the Awards. Due to the range of applications timber is used for, judges come from a variety of building professions to ensure every aspect of the design is scrutinised and appreciated. The 2024 judges are listed below, along with their credentials and expertise.



REBECCA GILLING

Former actress and model Rebecca Gilling is our distinguished sustainability judge for the Australian Timber Design Awards. Rebecca is now the Chief Executive Officer of Planet Ark, a position testifying to her dedication to environmental causes. With over 20 years at Planet Ark, she's been pivotal in championing large-scale environmental projects, such as planting 26 million trees and recycling initiatives. Rebecca's insights will be invaluable as the organisation pivots to critical environmental challenges like transitioning to renewables and fostering a circular economy. Drawing from her extensive environmental stewardship and her passion for sustainability, Rebecca will undoubtedly bring a unique perspective to the judging panel. The Australian Timber Design Awards welcomes her expertise and commitment.



ANTHONY BURKE

Anthony Burke is a Professor of Architecture at the University of Technology Sydney, and host of the TV series Restoration Australia, and Grand Designs Australia and co-host of Grand Designs Transformations all airing on the ABC. A sought-after host, expert presenter, design judge and regular contributor to academic and popular discourse on architecture, Anthony combines these with his public lectures, curated international tours and architectural experiences, to advocate for the value of good architecture and design.



LISA BARBARA

Former interiors lead at Fitzpatrick + Partners, Lisa has worked across a broad range of commercial and residential projects in diverse sectors. Sustainability and social impact are at the core of her work, both key tenets in her work as an interior designer and now as ESG Manager at furniture retailer, Cult. Her experience in materiality and working with mass timber building interiors, her leadership on Living Building Challenge projects, and her contributions to Architects Declare's Materials Working Group brings a varied background, view and experience to the awards judging process.



MICHELE DI GIORGIO

Michele Di Giorgio, a Design Manager recently joined MPA pre-construction team, previously at Gensler Australia, working across workplace, sciences and building refurbishments of heritage significance. Over Michele's 25+ year career she has successfully delivered a variety of workplace projects across Australia, with exposure to projects ranging from up to 60,000m², has provided opportunities to develop insights into the behaviours and wellbeing of people in workspaces. Working across all aspects of a project she has the design sensibility to guide the team, supporting progressive, sustainable outcomes that align to the client's brief/budget and programme. Her ability to view projects through multiple lenses enables her teams to thrive through creation and articulation.



DR ALI HADIGHEH

Dr Hadigheh is Associate Head of Research Education and a Senior Lecturer in Structural Engineering at the University of Sydney (USyd). He is also an Australian Research Council (ARC) DECRA Fellow. His research expertise includes the development of sustainable methods for recycling wastes (including wood waste), bio-based construction materials, structural health monitoring, and timber-concrete connections. He has secured over three million dollars in research funding and holds various patents for the recycling of composite materials. He has authored two books and published over 120 journal and conference papers. His research has significantly contributed to Australian standards, and he has served on various committees. He currently leads the Smart Materials and Sustainable Structures group at USyd.



CERTIFIED PASSIVE
HOUSE BUILDER
CRAFTING SUSTAINABLE
LUXURY LIVING SPACES

Mindful Building, founded by Akira Barzaghi, is a Sydney-based licensed building company specialising in sustainable luxury builds.

Our skilled team of builders and carpenters collaborate with leading architects to bring visionary living spaces to life.

Prioritising quality, we ensure the finest materials are used to meet project goals and budgets with precision and care. Whether it's a small addition, new build, or major renovation, we focus on efficiency, working closely with trades to keep you informed every step of the way.

Environmental responsibility is at the core of what we do. By integrating practical, eco-friendly solutions, we can create energy-efficient homes with minimal impact.

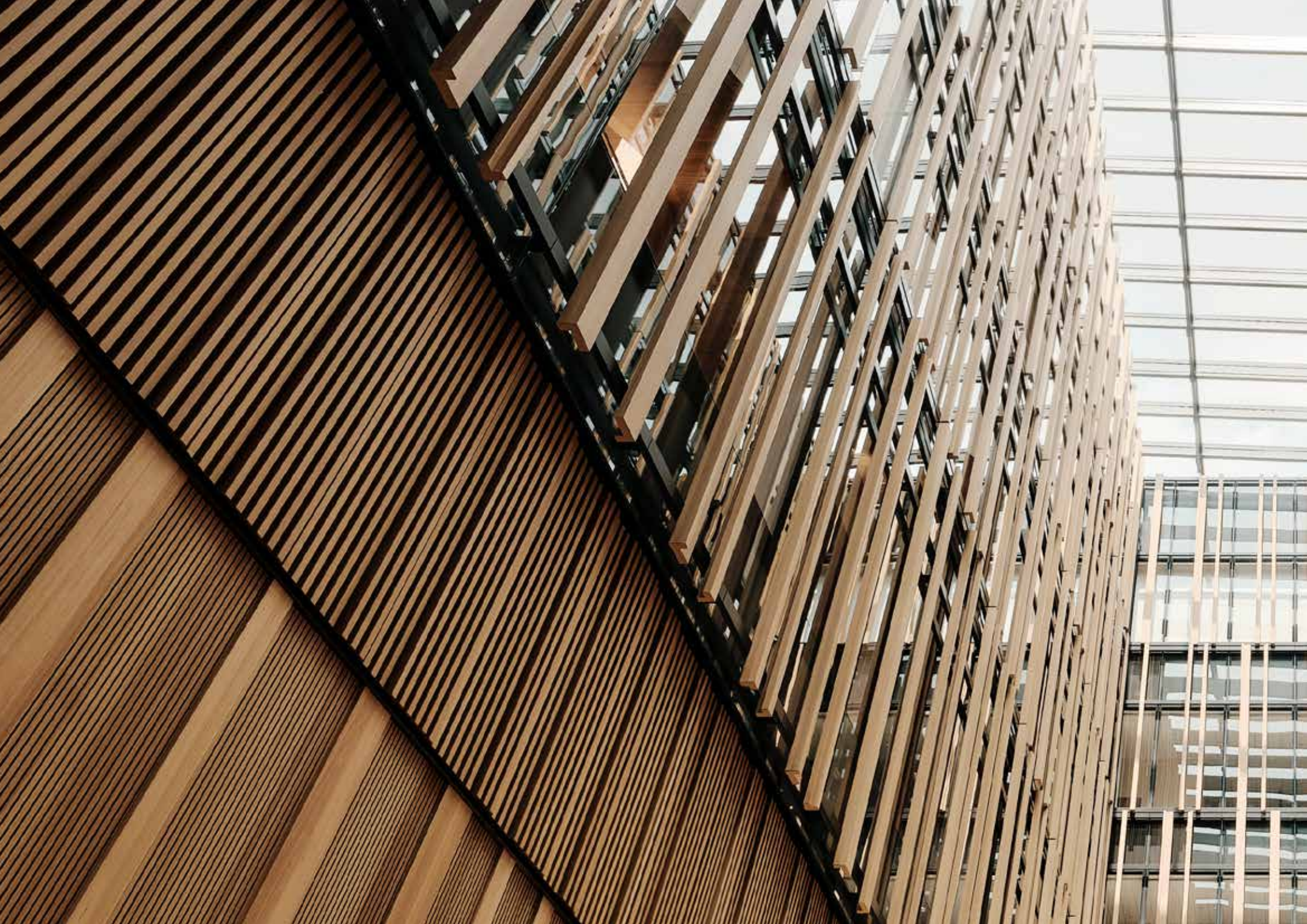
The project featured 'Sapling' – embodies our sustainability ethos. Designed to achieve Passivhaus Premium certification, Sapling features a Cross-Laminated Timber structure by KLH Pacific, high-density wood fibre insulation by KLH Pacific, and a solar-powered energy system. Its exterior is clad in Weathertex and Abodo for enhanced sustainability, and Kinzel Low-e double glazing ensures superior thermal performance.

Sapling showcases how sustainable building practices can create exceptional, environmentally conscious homes.



 MINDFUL
BUILDING

mindfulbuilding.com.au





| EXCELLENCE IN TIMBER DESIGN

OVERALL WINNER

EXCELLENCE IN TIMBER DESIGN
Australian Timber Design Award 2024





EMBASSY OF AUSTRALIA, WASHINGTON DC



BATES SMART

Structural Engineer: Aurecon

Fabricators: Embelton, Briggs Veneers, Matilda Veneers, ISEC and RPG

Builder: Clark Construction

Photographer: Joe Fletcher

Location: Massachusetts Ave NW, Washington DC, USA

The design of the new Embassy of Australia in Washington D.C. was complex, necessitating a delicate balance between cultural representation, iconic civic presence and practical security considerations. The inspiration came from Australia's iconic landscape and embodies the essence of the vast continent. The building's transparency was intended to capture the inherent Australian values of welcomeness and trust, while the interior's expansive atmosphere embodies the vastness of the Australian landscape. At the heart of the 20,000 square metre building, a large atrium serves as an orienting space displaying a powerful connection between the ground plane and the sky. This central atrium establishes a north south axial arrangement of representational spaces where every visitor is granted an equally immersive experience on entry. The main representational spaces are defined by strong materiality with Australian timber wall panels, that provide both air reticulation and sound absorption, organised around a series of textured horizontal bands that transition from rough to smooth. This mirrors the protective qualities of the bark during the eucalypt forest's cycle of growth, burn and regrowth. Intricate metallic filigree screens have been sensitively deployed to mediate the interplay of light and shadow in social breakout and office spaces.



WINNER

EXCELLENCE IN TIMBER DESIGN
Residential Class 1 – New Buildings

PENTARCH
FORESTRY™



| TAROONA HOUSE

ARCHIER

Structural Engineer: Structured Parametrics

Builder: Merlin Constructions

Fabricator: Candour

Photographer: Thurston Empson

Location: Hinsby Beach, Taroona, Tasmania

On a steep and densely forested hill overlooking Hinsby Beach, three rectangular structures have been assembled like tree branches that fall down the hill and pile on top of one another. Cantilevering forms create openings between the structures and the hillside, offering pathways for local wildlife and a concealed entry to the main house. Interior spaces feature a dark timber palette used to amplify the activity of the bushland surrounding the house, while the dwelling has been wrapped in a prefabricated timber window system, maximising the connection to the powerful Derwent River. As there was virtually no threat of excessive thermal gain it was possible to design the house with a complete glass envelope, which helps to immerse the occupants in the surrounding landscape. This was achieved using a structural window system to carry the weight of the roof. As there was no such system available on the market, the architects designed, built and painted every mullion, header and seal in the house. This led to the formation of an architectural prefabrication company, Candour, that uses digital CAD plugins to provide architects with advanced timber fabrication through a range of innovative Australian-grown timber building components.



WINNER

EXCELLENCE IN TIMBER DESIGN
Residential Class 1 - Alteration or Addition



| VERANDAH TERRACES

PHORM ARCHITECTURE + DESIGN

Structural Engineer: Westera Partners
Builder: Cross Builders
Fabricators: Sunshine State Cabinets
Photographer: Christopher Frederick Jones
Location: West End, Brisbane, Queensland

Verandah Terraces is a contemporary residential addition to a rare 1890s Queenslander cottage, embedded in the 'timber and tin' enclave of Petrie Terrace. The design was intended to reflect Brisbane's cultural identity, an architectural bridge between its past and its future. The resulting project is a three-storey construction using recycled, local mixed species hardwood. Notably, the preferred aspect and broadest exposed elevation faces west. To overcome this the designers created a retractable two-storey hardwood screen wall to shield against the intense afternoon summer sun, but also provide easy access to the stunning view at other times of the day and year.





| NORTHCOTE HOUSE

LLDA & POWER TO MAKE

Structural Engineer: TGA Engineers

Builder: LLDS / Foundation Constructions

Fabricators: Power to Make, Binq Windows

Photographer: Tom Ross

Location: Preston, Melbourne, Victoria

Northcote House, located in the inner-suburbia laneways of Melbourne, was designed to re-conceptualise the Victorian terrace typology with contemporary advanced fabrication technology. The outcome is a compact urban infill dwelling with an elevated roof garden, reducing the urban heat island effect and supporting local ecology. The free-form roof structure creates a dramatic space visible from the street, reminiscent of the neighbourhood's large factory lofts and Victorian church halls. A central void with timber stairs brings natural daylight and ventilation into the depth of the house, thereby eliminating the typical dark corridor of a terrace typology. A circular snug has been used to divide the ground floor into the east and west bedrooms, each with antechambers that function as utilities and ensuites. The stair around the snug provides a dramatic descent into the space, which is furnished with bespoke upholsteries and dark green velvet curtains. Certified plywood was chosen for ease of manufacturing, and to utilise local knowledge in advanced digital manufacturing and robotics located within five kilometres of the site.

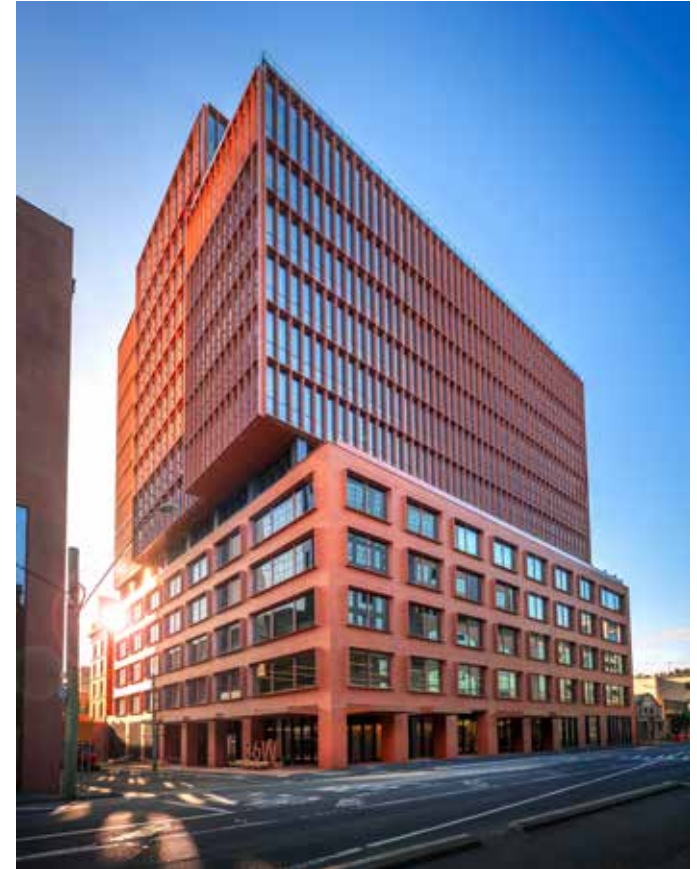


WINNER

EXCELLENCE IN TIMBER DESIGN
Commercial Building



| T3 COLLINGWOOD



JACKSON CLEMENTS BURROWS ARCHITECTS

Structural Engineer: AECOM

Builder: ICON

Fabricators: Australian Sustainable Hardwoods (ASH), XLam Australia

Photographers: Ned Meldrum, Tom Blachford

Location: Collingwood, Melbourne, Victoria

T3 Collingwood, situated at 36-52 Wellington Street, Collingwood, is Melbourne's tallest timber hybrid office building. It serves as a pioneering example of mass timber construction and represents the first Australian application of Hines' T3 (Timber, Transit, Technology) concept. The successful delivery of the mass timber structure demonstrates the maturity of the Australian timber market, validating that timber can be successfully executed in the cost-sensitive commercial sector, providing a premium product with outstanding sustainability credentials. The 15-storey building features eight levels of cross-laminated timber (CLT) floor panels and a glue-laminated timber (GLT) post and beam structure. The hybrid timber design has significantly reduced the building mass and provided a 34 per cent reduction in estimated upfront carbon emissions (A1-A5, EN15978) compared to a conventional post-tensioned concrete frame. T3 Collingwood also maintains an estimated 34 per cent reduction in carbon emissions over its entire life cycle (A-D EN15978) compared to the Green Star reference building. Now operational, the building boasts a 6 Star Green Star Design and aims for 5.5 Star NABERS Energy performance rating. This project exemplifies how timber, when harnessed thoughtfully, can elevate sustainability, aesthetics, and functionality in commercial construction.



WINNER

EXCELLENCE IN TIMBER DESIGN
Public Building

RUBNER THE CA
TIMBER



| MICHAEL KIRBY BUILDING (MACQUARIE UNIVERSITY LAW SCHOOL)



HASSELL STUDIO

Structural Engineer: Taylor Thompson Whitting (TTW)

Builder: FDC Construction (NSW)

Fabricators: Rubner Holzbau, KLH Massivholz

Photographer: Nicole England

Location: Macquarie Park, Sydney, New South Wales

The Michael Kirby Building at Macquarie University stands as a testament to sustainable design and architectural innovation. The building is a beacon of adaptive reuse, transforming a 1980s concrete structure into a modern, timber-framed edifice. The use of cross-laminated timber (CLT) not only reduces the building's carbon footprint but also creates an inviting atmosphere conducive to learning and collaboration. With its state-of-the-art educational facilities, including a moot court, the Michael Kirby Building is a world-leading example of progressive educational architecture. The Law School Project involved the redevelopment of the existing C5C building, including all services, amenities, and infrastructure. This included the demolition of levels 2 and 3 and the partial demolition of ground floor and level 1, and the retention of the existing first floor slab and column structural elements as well as two existing in-ground theatres. The resulting structure is a four-storey building incorporating mass timber on top of and around the retained first floor slab structures, as well as two new concrete cores. The large open central atrium, which contains a scenic lift, architectural helical staircase and cantilevered CLT meeting rooms, is a key design feature. The redeveloped building has an increased height up to 4 storeys and an approximate gross floor area of 8,610 square metres.

WINNER

EXCELLENCE IN TIMBER DESIGN

Fitout - Commercial and Public

Intergrain
TRADE & INDUSTRIAL



| EMBASSY OF AUSTRALIA, WASHINGTON DC



BATES SMART

Structural Engineer: Aurecon

Fabricators: Embelton, Briggs Veneers, Matilda Veneers, ISEC and RPG

Builder: Clark Construction

Photographer: Joe Fletcher

Location: Massachusetts Ave NW, Washington DC, USA

The design of the new Australian Embassy in Washington D.C. elegantly balances cultural representation, civic presence, and security. Drawing inspiration from Australia's vast landscape, the building's expansive interior embodies the nation's values of openness and trust. At its heart, a grand atrium connects the ground to the sky, establishing a powerful north-south axis that immerses visitors in a spatial experience upon entry. The fitout showcases the beauty of Australian timber, with wall panels that provide both aesthetic warmth and functional benefits like air circulation and sound absorption. These panels evoke the protective bark of eucalypt trees, symbolising growth and renewal. The carefully selected timbers bring a touch of Australia's natural beauty to the U.S., offering a rich contrast to Washington's urban environment. Intricate metallic screens further enhance this timbered backdrop, creating a delicate interplay of light and shadow, blending nature and architecture. This thoughtful design reflects both Australia's cultural identity and the enduring beauty of its timber craftsmanship on an international stage.



WINNER

EXCELLENCE IN TIMBER DESIGN
Furniture & Joinery

ITI Australia
Brands to build with



| HOLOCENE HOUSE

CplusC ARCHITECTS + BUILDERS

Structural Engineer: ROR Consulting Engineers

Builder: CplusC Architects + Builders

Fabricators: AHJ Architectural Hardwood Joinery, Tenze Engineering

Photographer: Michael Lassman, Renata Dominik

Location: Manly, Sydney, New South Wales

Internally, this project showcases an exceptional focus on creating a warm, natural, and sustainable living environment. The extensive use of timber throughout the interior, combined with low volatile organic compound materials and coatings, ensures a healthy air quality for the building's occupants. The joinery features low-formaldehyde certified plywood and 'Paperock,' a durable composite material crafted from reconstituted paper pulp, lending a natural, textured warmth to the space. The meticulous selection of materials reflects a commitment to both aesthetics and sustainability. Timber elements, including recycled timber products, are thoughtfully integrated to create a cohesive and harmonious atmosphere. This focus on natural materials infuses the interior with an organic feel, balancing beauty with functionality. The design decisions were made with sustainability in mind, ensuring that the materials used not only enhance the space visually but also promote longevity and reduce the need for frequent maintenance. The result is an interior that feels inviting, timeless, and environmentally conscious.





BUILD LIKE THE WORLD DEPENDS ON IT.

SUSTAINABLE & RENEWABLE
MASS TIMBER





FERNERY AT BALLARAT BOTANIC GARDENS

BALANCE ARCHITECTURE & INTERIOR DESIGN

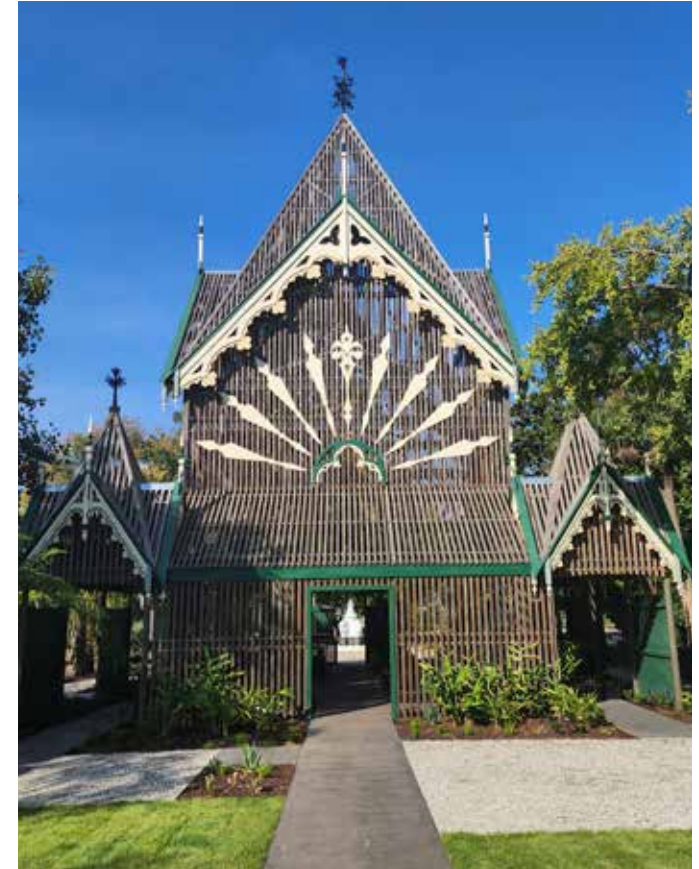
Structural Engineer: Stantec

Builder: Buildspec Constructions

Photographer: Andrew Fedorowicz

Location: Lake Wendouree, Ballarat, Victoria

The original Fernery in the Ballarat Botanic Gardens, built in 1887, was demolished in the 1920s after the timber design failed to endure the harsh Australian climate. In the modern reconstruction, the design emphasises the beauty of the external timber slats, crafted from Cumaru, a highly durable wood with a 40-year above-ground life. These slats not only showcase the rich texture and warmth of the timber but are also meticulously detailed in their size and spacing to allow ample sunlight to filter through. Cumaru's density adds to the precision of the construction, requiring pre-drilling before fixing, highlighting the care taken in every aspect of the craftsmanship. The Certified Timber, termite-resistant timber is a testament to both functionality and elegance in the design.





BERNINNET CULTURAL AND COMMUNITY CENTRE

JACKSON CLEMENTS BURROWS ARCHITECTS

Structural Engineer: WGA

Builder: McCorkell Constructions

Fabricators: XLam Australia, Australian Sustainable Hardwoods (ASH)

Photographer: Peter Clarke, Victor Vieaux

Location: Cowes, Phillip Island, Victoria

Located on Phillip Island in Victoria, Berninnet – meaning ‘Gather Together’ – is a purpose-built public building to provide a range of facilities, including a theatre, library, gallery, museum, community function rooms and offices. The building’s ambitious sustainability agenda aligns with Council’s aspiration to produce a low energy, low carbon building, with low ongoing running costs due to its thermally efficient Passivhaus envelope. The materials incorporated in the building were chosen to reflect the colours and textures of the island. Warm, pink-cream brick references nearby sand dunes, beaches and weathered granite rocks at the eastern end of Cape Woolamai, whilst the internal timber columns of the grand hall are redolent of the island’s jetties and pier structures. Locally sourced material choices include carbon-neutral bricks made in Wollert, sustainably sourced hardwood grown in Gippsland and engineered in Wantirna, and the cross-laminated timber (CLT) was manufactured in Wodonga. The building is a dynamic and interactive destination, and has become a source of civic pride. Bringing together the cultural and social aspirations of the community, it showcases the region’s rich history and culture. Designed to the Passivhaus standard and incorporating mass timber construction, the Berninnet Cultural and Community Centre has expanded and diversified existing community programs and services, and created a place for people to meet and connect.





| RIVER HOUSE

SARAH SHEARMAN – BROTHER NATURE DESIGN

Structural Engineer: Cantilever Studio

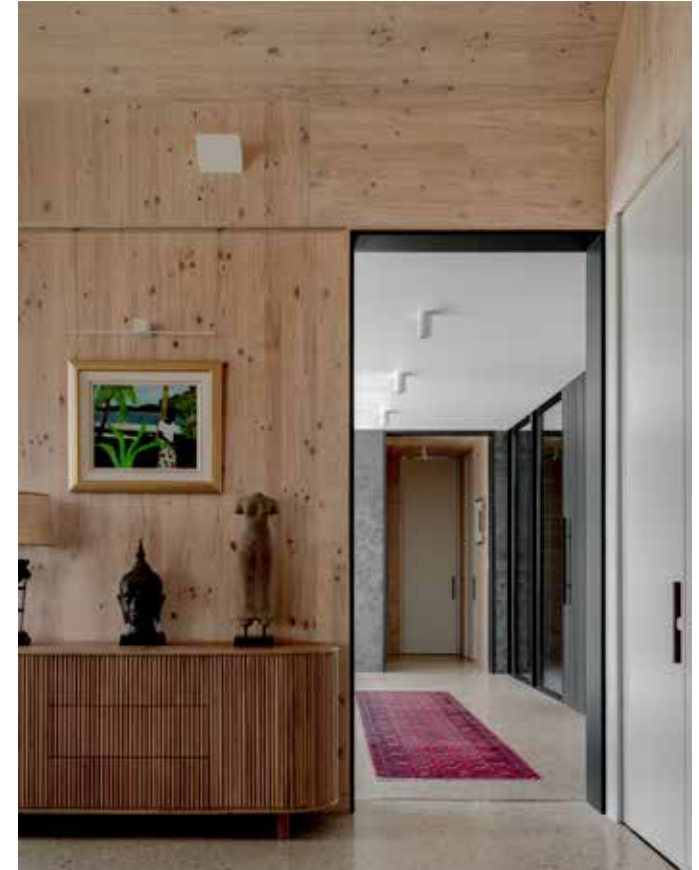
Builder: Brother Nature

Fabricator: XLam Australia

Photographer: Jascha Oakes

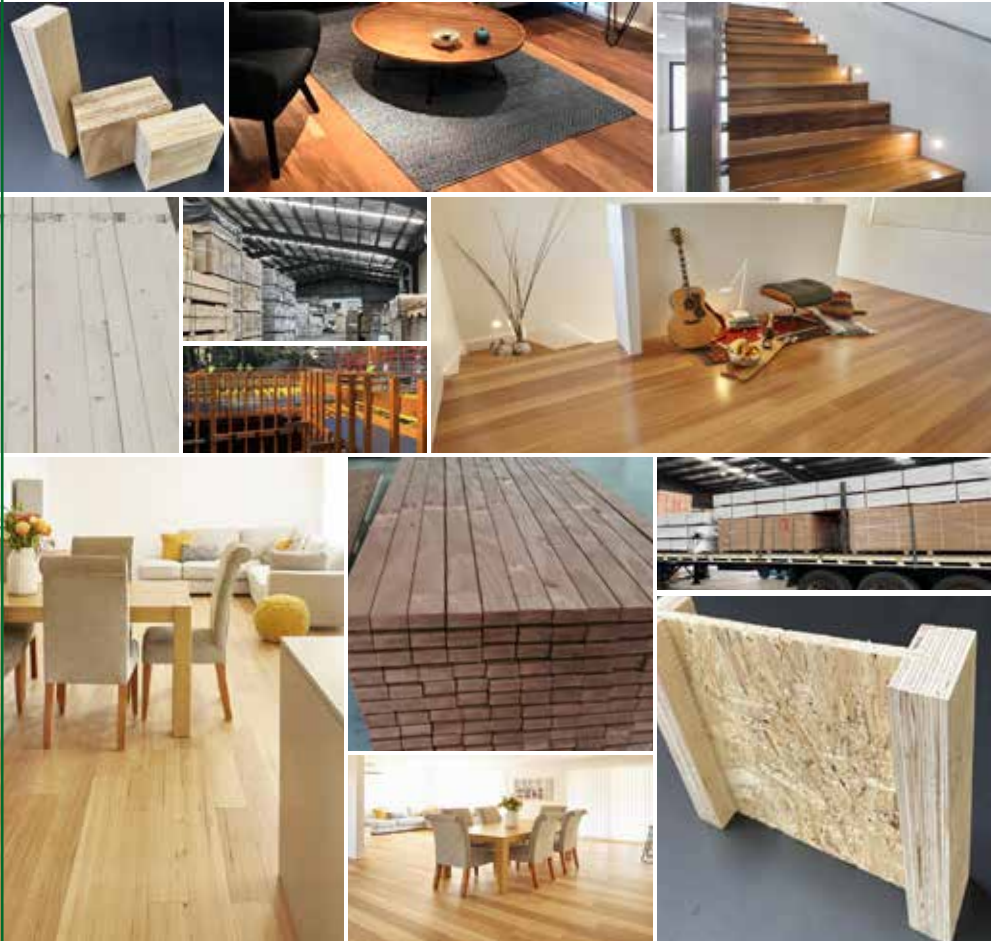
Location: Eden, New South Wales

For River House in rural NSW, materiality and texture are fundamental to its success, wrapping its occupants in a warm and natural palette in perfect harmony with the Australian outdoors. Exposed cross-laminated timber (CLT) is the hero, delivering biophilic health and wellbeing benefits in almost every room. The pavilion design is well-suited to CLT and has thoughtfully addressed the design brief by supporting intergenerational living and facilitating ageing-in-place. River House provides a case study in contemporary Australian bush homes, delivered using PEFC-certified mass timber that was produced less than 500 kilometres from the project site.





Premium Manufacturer & Distributor of
High Quality Timber & Building Products



www.auswood.com.au

Phone: 1800 888 986 Email: info@auswood.com.au



Little OG

Built by Horizon
Building Group

mcmahon and nerlich
crafting award-winning architecture since 2013

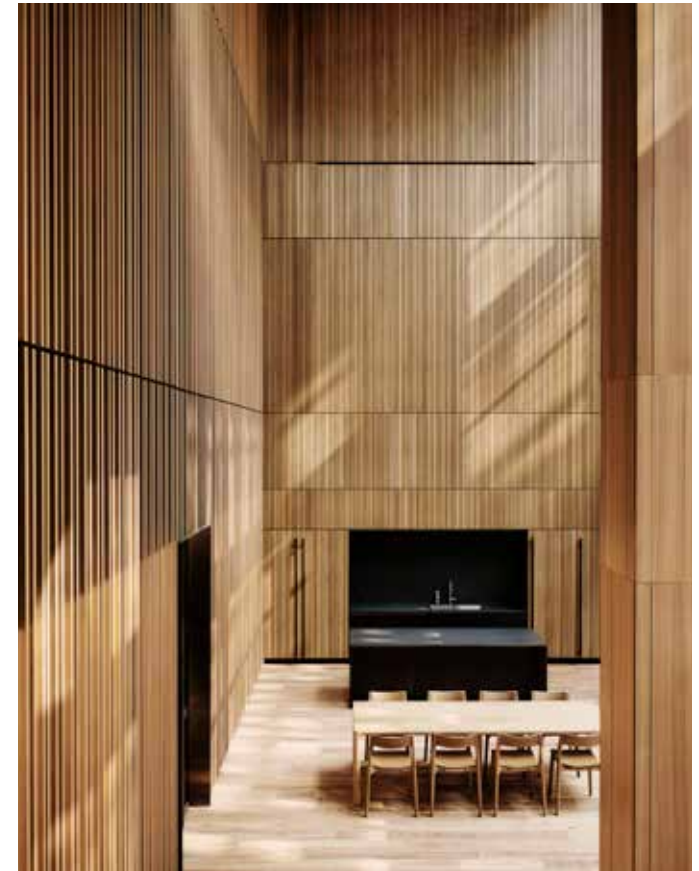
architecture | interior design | urbanism

www.mandna.com.au | studio@mcmahonandnerlich.com.au | kate & rob 03 8609 1528





EMBASSY OF AUSTRALIA, WASHINGTON DC



BATES SMART

Structural Engineer: Aurecon

Fabricators: Embelton, Briggs Veneers, Matilda Veneers, ISEC and RPG

Builder: Clark Construction

Photographer: Joe Fletcher

Location: Massachusetts Ave NW, Washington DC, USA

The new Embassy of Australia in Washington D.C. showcases the global reach of Australian design. This project masterfully blends cultural representation, civic prominence, and security with a nod to Australia's iconic landscapes. The building's transparency reflects Australia's values of openness and trust, while the vast interior evokes the country's expansive terrain. At the core of the 20,000-square-metre embassy is a grand atrium, symbolically linking the ground to the sky and creating an immersive experience for all visitors. Australian timber panels, inspired by the regenerative cycles of eucalyptus forests, are a key feature, alongside intricate metallic filigree screens that play with light and shadow. This embassy highlights the impressive international influence of Australian architecture, seamlessly integrating local materials and design elements into a prominent global setting.



WINNER

EXCELLENCE IN TIMBER DESIGN

People's Choice

PENTARCH
FORESTRY™



MICHAEL KIRBY BUILDING (MACQUARIE UNIVERSITY LAW SCHOOL)

HASSELL STUDIO

Structural Engineer: Taylor Thompson Whitting (TTW)

Builder: FDC Construction

Fabricators: Rubner Holzbau, KLH Massivholz

Photographer: Nicole England

Location: Macquarie Park, Sydney, New South Wales

The Michael Kirby Building at Macquarie University, which won the People's Choice Award, gained significant attention through its compelling social media campaign that highlighted the project's innovative features. Central to its appeal was the transformation of a 1980s concrete structure into a modern architectural icon, using cross-laminated timber (CLT) to drastically reduce the building's carbon footprint. The campaign focused on the striking visual appeal of the timber-framed design, showcasing the warm, inviting atmosphere created by the CLT, which enhances both the learning environment and collaboration spaces. A standout feature that captured public interest was the large open central atrium, featuring a scenic lift, an architectural helical staircase, and cantilevered CLT meeting rooms, which together form the heart of the building. This innovative use of mass timber around the retained first-floor slab structures, combined with two new concrete cores, reinforced the building's progressive approach to sustainability and adaptive reuse. The redevelopment involved extensive modifications, including the partial demolition of existing floors and the careful preservation of key structural elements. The resulting four-storey building spans approximately 8,610 square metres, housing state-of-the-art educational facilities like the moot court, further solidifying its position as a world-leading example of modern educational architecture.



WINNER

EXCELLENCE IN THE USE OF TIMBER PRODUCTS
Australian Certified Timber



| IRRAWADDY



INCIDENTAL ARCHITECTURE

Structural Engineer: PMI Engineers

Builder: Avalon Constructions

Fabricators: H2 Custom Joinery, Taylor Made Architectural Joinery

Photographer: Clinton Weaver

Location: Chatswood, Sydney, New South Wales

Irrawaddy is located on Cammeraygal land, within suburban Chatswood, an area that has historically been occupied by small cottages, yet has experienced a rapid increase in scale through a growing number of large project homes and medium to high density apartments. The home was designed to nurture a large family of eight with a sense of generosity that belies its relatively small site, provided by close connection to the landscape and the widespread use of natural materials. The home's occupants, having grown up in what was formerly known as Burma, shared stories of the Irrawaddy River being the lifeblood of Burmese culture and fundamental to almost every aspect of life – commerce, transport, spirituality, and shelter. The designers took inspiration from the vernacular of the Burmese timber delta houses built on stilts – the branch-like structure of Irrawaddy is visually expressed inside and out, straddling the ground floor footprint, the lightweight first floor seemingly floating overhead. The house is arranged as two pavilions separated by a double height void space and linked by an open jointed decking walkway. This break in the plan allows solar penetration, landscape connection and natural cross-ventilation. The extensive overhangs allow the ground floor living spaces to spill out beyond the building footprint and thus demand on internal built area has been reduced.



Sustainable timber products you can trust

Look for the
Responsible Wood
and PEFC certification
labels.

responsiblewood.org.au

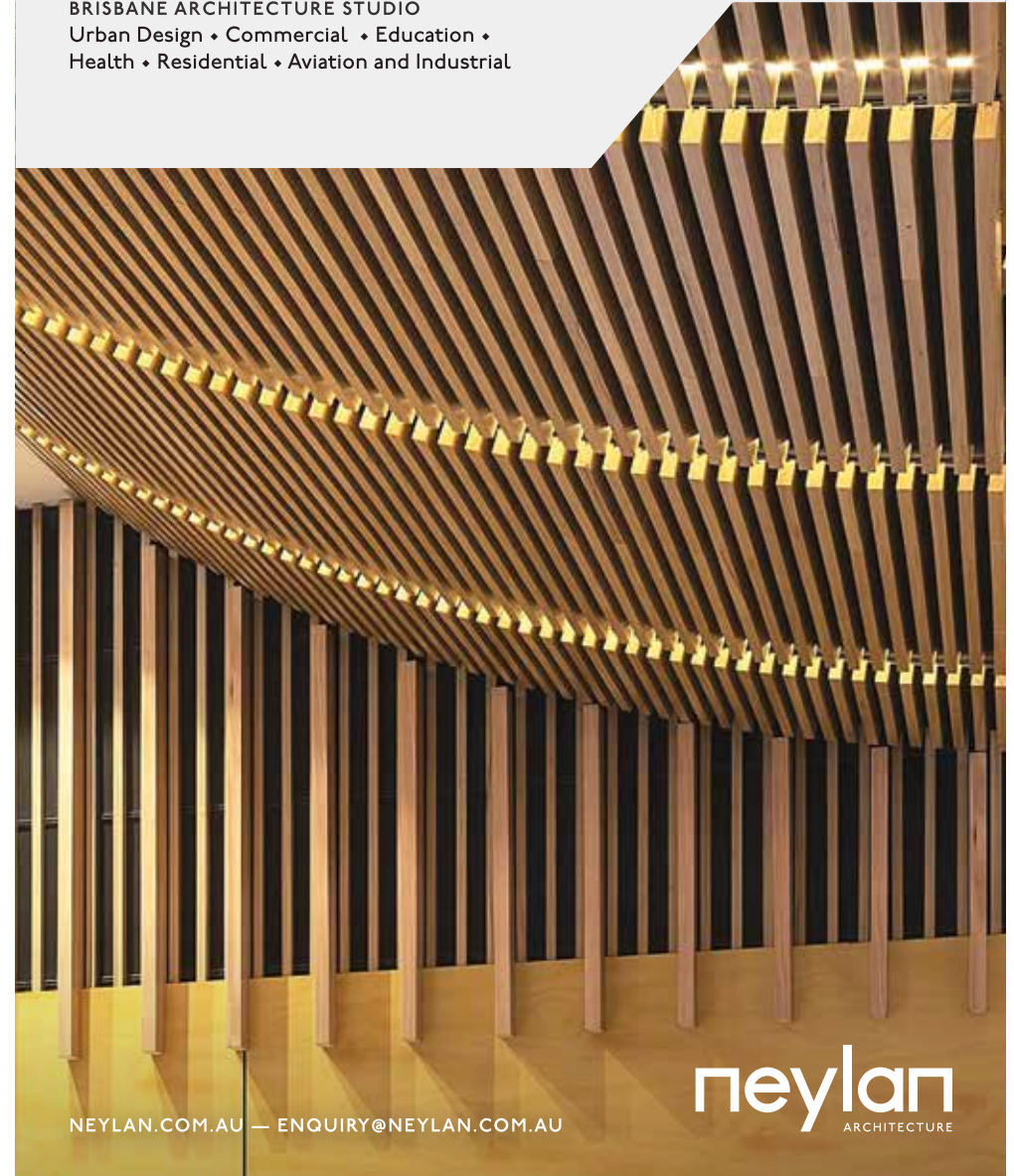
Architect: Irrawaddy by Incidental Architecture
Photographer: Clinton Weaver



Elevating timber to timeless artistry.

Considered, sustainable design at the fore.

BRISBANE ARCHITECTURE STUDIO
Urban Design • Commercial • Education •
Health • Residential • Aviation and Industrial



NEYLAN.COM.AU — ENQUIRY@NEYLAN.COM.AU

neylan
ARCHITECTURE

WINNER

EXCELLENCE IN THE USE OF TIMBER PRODUCTS
Recycled Timber



FIRST STEPS COUNT CHILD AND COMMUNITY CENTRE

AUSTIN MCFARLAND ARCHITECTS

Structural Engineer: Cantilever Consulting Engineers

Builder: Duber Construction

Fabricators: Curwood, North West Frames and Trusses

Photographer: Matthew Carbone, Russell McFarland

Location: Taree, Mid Coast, New South Wales

Over fifteen years ago, a group of dedicated community members came up with an idea to create an integrated hub that would give children and families from vulnerable communities access to a range of services in a single location. That vision has become First Steps Count Child and Community Centre. The primary intent was to create an accessible, nurturing place for the community, so families feel valued and respected, and provide a safe and welcoming space for their children. Early community involvement in the design concept was critical to its success. The idea for the 'pod' spaces came from community, as did the use of woven baskets to capture and nurture the inhabitants, and the desire to integrate local artwork, both indigenous and nonindigenous. Trees removed for the construction were incorporated into the building, most spectacularly as external columns. The building was completed with a holistic sustainability aspiration, with the overarching goal of, 'What if every single act of design and construction made the world a better place?' By working in close collaboration, the design and construction team has created a building that not only meets the brief, but also a space that is beyond what the local community could ever have imagined; a calm, beautiful, exceptional place for all to enjoy.



FINALISTS

EXCELLENCE IN TIMBER DESIGN

Residential Class 1 - New Building

SURF CHECK

Incidental Architecture

NORTHCOTE

LLDS

HIGH TIDE HOUSE

Ware Architects

BANGALOW ROAD HOUSE

Son Studio

KIAMBA VALLEY FARMHOUSE

Aspect Architecture

Residential Class 1 - Alterations & Additions

HOUSE IN LILYFIELD

Charmaine Pang Architect

WISTERIA

Carter Williamson Architects

Fitout - Residential

HOLOCENE HOUSE

CplusC Architects + Builders

VERANDAH TERRACES

Phorm architecture + design

MOFFAT BEACH HOUSE

Richard Kirk Architect

Standalone Structure

OZONE OFURO

Incidental Architecture

Commercial Buildings

ST AIDAN'S – AMBIWERRA SPORTS PRECINCT

Blight Rayner

POTASSIUM ST INDUSTRIAL

Sancus Property

Public Building

NED KELLY DISCOVERY HUB

Content Studio

BERNINNEIT CULTURAL AND COMMUNITY CENTRE

Jackson Clements Burrows Architects

UNISC MORETON BAY CAMPUS STAGE 2

Richard Kirk Architect

MATRAVILLE YOUTH & CULTURAL HALL

Sam Crawford Architects

Fitout - Commercial and Public

UPPER HOUSE

Koichi Takada Architects

INTERMAIN

BVN

UNISC MORETON BAY CAMPUS STAGE 2

Richard Kirk Architect

Furniture & Joinery

CHAC PRIMARY LIBRARY

Reddog Architects in association with Blueline Architecture

OFFICE FURNITURE AND JOINERY

ING Studio

EXCELLENCE IN THE USE OF TIMBER PRODUCTS

Recycled Timber

RIVER HEARTH HOUSE

arcke

VERANDAH TERRACES

Phorm architecture + design

DUNE HOUSE

Architecture Saville Isaacs

Australian Certified Timber

T3 COLLINGWOOD

Jackson Clements Burrows Architects

SURF CHECK

Incidental Architecture

SWEETWATER HOUSE

Jackson Clements Burrows Architects

MERIT AWARDS

Rising Star

THIS IS RINA

Pepper & Well

GERTRUDE HOTEL, FITZROY

Pepper & Well

Sustainability

UNISC MORETON BAY CAMPUS STAGE 2

Richard Kirk Architect

UPPER HOUSE

Koichi Takada Architects

T3 COLLINGWOOD

Jackson Clements Burrows Architects

International Projects

RE-PLY

BVN



| ENTRANTS



500 BOURKE STREET REDEVELOPMENT
FENDER KATSALIDIS



ANGLESEA PASSIVE HOUSE
ZEN ARCHITECTS



BANGALOW ROAD HOUSE
SON STUDIO



BERNINNEIT CULTURAL AND COMMUNITY CENTRE
JACKSON CLEMENTS
BURROWS ARCHITECTS



CHAC PRIMARY LIBRARY
REDDOG ARCHITECTS IN ASSOCIATION
WITH BLUELINE ARCHITECTURE



DIANELLA COMMUNITY CENTRE
CANVAS PROJECTS



DIMENSIONS X OM1
PETER STUTCHBURY ARCHITECTURE



DUNE HOUSE
ARCHITECTURE SAVILLE ISAACS

ENTRANTS



EMBASSY OF AUSTRALIA, WASHINGTON DC
BATES SMART



FERN STREET CHILDREN'S CENTRE
ZEN ARCHITECTS



FERNERY AT BALLARAT BOTANIC GARDENS
BALANCE ARCHITECTURE
& INTERIOR DESIGN



**FIRST STEPS COUNT CHILD
AND COMMUNITY CENTRE**
AUSTIN MCFARLAND ARCHITECTS



GABLE PARK
WEAVER+CO ARCHITECTS



GERTRUDE HOTEL, FITZROY
PEPPER & WELL



GRACE PARK HOUSE 2.0
POLY STUDIO



GREGORY HILLS PUBLIC SCHOOL
LIPMAN



GUNDITJ MIRRORING KEEPING PLACE
PHILLIPS/PILKINGTON ARCHITECTS



HIGH TIDE HOUSE
WARE ARCHITECTS



HOLOCENE HOUSE
CPLUSC ARCHITECTS + BUILDERS



HOUSE IN LILYFIELD
CHARMAINE PANG ARCHITECT



INTERMAIN
BVN



IRRAWADDY
INCIDENTAL ARCHITECTURE



KIAMBA VALLEY FARMHOUSE
ASPECT ARCHITECTURE



LITTLE OG
MCMAHON AND NERLICH ARCHITECTS

ENTRANTS



LYNDOCH PRIMARY CARE
MARCHESE PARTNERS



MATRAVILLE YOUTH & CULTURAL HALL
SAM CRAWFORD ARCHITECTS



**MICHAEL KIRBY BUILDING
(MACQUARIE UNIVERSITY LAW SCHOOL)**
HASSELL STUDIO



MINIMARU
ELVINTAN DESIGN



MOFFAT BEACH HOUSE
RICHARD KIRK ARCHITECT



NED KELLY DISCOVERY HUB
CONTENT STUDIO



NEW FARM RESIDENCE
CROFT ARCHITECTS



**NORTHCOTE AQUATIC
& RECREATION CENTRE**
WARREN AND MAHONEY



NORTHCOTE HOUSE
LLDS



OFFICE FURNITURE AND JOINERY
ING STUDIO



ORAN PARK PUBLIC SCHOOL
LIPMAN



OZONE OFURO
INCIDENTAL ARCHITECTURE



POTASSIUM ST INDUSTRIAL
SANCUS PROPERTY



RAVENSTHORPE CULTURAL PRECINCT
PETER HOBBS ARCHITECTS



RE-PLY
BVN



RIVER HEARTH HOUSE
ARCKE

ENTRANTS



RIVER HOUSE

BROTHER NATURE DESIGN



SAPLING

ANDERSON ARCHITECTURE



ST AIDAN'S, AMBIWERRA SPORTS PRECINCT

BLIGHT RAYNER



SURF CHECK

INCIDENTAL ARCHITECTURE



SWEETWATER HOUSE

JACKSON CLEMENTS BURROWS ARCHITECTS



T3 COLLINGWOOD

JACKSON CLEMENTS BURROWS ARCHITECTS



TAROONA HOUSE

ARCHIER



THE WOOLSHED AT ROUSE HILL ESTATE

PARTRIDGE STRUCTURAL



THIS IS RINA
PEPPER & WELL



TZU CHI FOUNDATION COMMUNITY CENTRE
NEYLAN ARCHITECTURE



UNISC MORETON BAY CAMPUS STAGE 2
RICHARD KIRK ARCHITECT



UPPER HOUSE
KOICHI TAKADA ARCHITECTS



VERANDAH TERRACES
PHORM ARCHITECTURE + DESIGN



WISTERIA
CARTER WILLIAMSON ARCHITECTS



**WULANDA RECREATION
+ CONVENTION CENTRE**
DESIGNINC

HALL OF FAME

2000 – 2023

2000

KANGAROO VALLEY HOUSE

STUTCHBURY & PAPE ARCHITECTS

2001

NATIONAL WINE CENTRE

COX GRIEVE GILLETT

2002

THE FOREST ECOCENTRE, TASMANIA

ROBERT MORRIS–NUNN ARCHITECTS

2003

BALA RESIDENCE, UPPER MACDONALD

B + C DESIGN CONSTRUCT

2004

BUNGAN BEACH HOUSE

DAWSON BROWN ARCHITECTURE

2005

FLINDERS HOUSE

JOHN WARDLE ARCHITECTS

2006

EDWARD RIVER HOUSE

JACKSON CLEMENTS BUROWS

2007

MOONAH LINKS LODGES

HAYBALL LEONARD STENT

2008

OUTCROP HOUSE

PETER STUTCHBURY ARCHITECTURE

2009

TREE OF KNOWLEDGE MEMORIAL

BRIAN HOOPER ARCHITECT AND
M3ARCHITECTURE

2010

BURRIDGE READ RESIDENCE

DAVID BOYLE ARCHITECT

2011

SAFFIRE

CIRCA MORRIS–NUNN WALKER IN
COLLABORATION WITH CHADA

2012

CANDLEBARK SCHOOL LIBRARY

PAUL HAAR ARCHITECT

2013

FORTE AT VICTORIA HARBOUR

LENDLEASE

2014

**DANDENONG MENTAL
HEALTH FACILITY**

BATES SMART IN COLLABORATION WITH
IRWIN ALSOP GROUP

2015

**MELBOURNE SCHOOL OF DESIGN –
UNIVERSITY OF MELBOURNE**

JOHN WARDLE ARCHITECTS IN
COLLABORATION WITH NADAAA

2016

THREE CAPES TRACK CABINS

JAWSARCHITECTS

2017

INTERNATIONAL HOUSE

TZANNES AND LENDLEASE

2018

BUNJIL PLACE

FRANCIS–JONES MOREHEN THORP

2019

THE SEED HOUSE

FITZPATRICK+PARTNERS

2020

MARRICKVILLE LIBRARY

BVN

2021

ERIC TWEEDALE STADIUM

DWP AUSTRALIA AND NORTHROP

2022

WATERFRONT TAVERN

H & E ARCHITECTS

2023

**SYDNEY OPERA HOUSE CONCERT
HALL RENEWAL**

ARM ARCHITECTURE

D PEARCE
CONSTRUCTIONS

With over 20 years of experience, D Pearce Constructions is an award-winning, family-owned Brisbane company known for high-quality residential renovations and new builds, collaborating with top architects and designers in Queensland.

Duayne's passion for perfection and love of architecture pushes him and his team to make sure our clients get the very best outcome on each project. We are specialists in new architectural houses and quality renovations and extensions. Craftsmanship, quality, client relationships and sustainable building practices are the foundation of our award-winning business.

Moffat Beach House
Queensland's first Cross-Laminated Timber (CLT) house using prefabricated Mass Engineered Timber (MET) construction, providing a durable and resilient structure against the harsh coastal environment.

Scan a QR code to explore our stunning projects and see what we can build for you!

www.dpearceconstructions.com.au
admin@dpearceconstructions.com.au

NEW HOMES
Crafting beautiful, high-quality homes designed for modern lifestyles and needs.

RENOVATIONS
Revitalize your life with your home with expertly crafted renovations tailored to your style.

Celebrating **Creativity**
and **Sustainability** in Timber

BRITTON TIMBERS

www.brittontimbers.com.au



Timber Flooring & Decking Specialists

Sydney's Largest Range of Timber Flooring & Decking

- ▶ Over 2000 packs of Solid Flooring in stock
- ▶ Over 20 species of Timber Decking in stock
- ▶ Exclusive distributor of Modern Deck; The latest technology in Composite Decking
- ▶ Full range of Engineered Flooring, From European Oak to Australian Species
- ▶ Extensive range of Flooring Hardware, Machines, tools & abrasives



Scan to visit
our website



Call our office today to speak to our friendly staff on
02 9774-2944
or visit us instore at
41 Heathcote Road, Moorebank, NSW 2170